



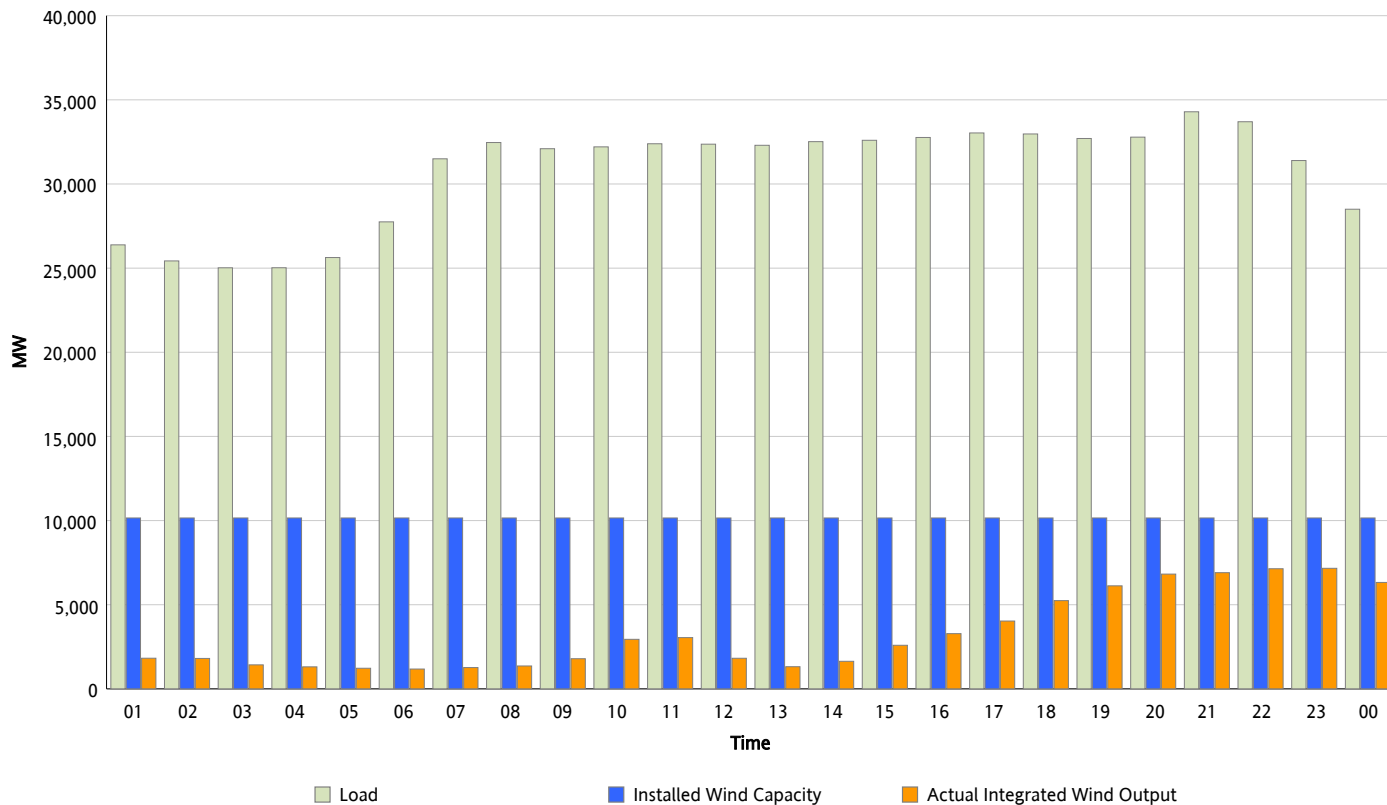
ERCOT Grid Operations

Wind Integration Report : 04/25/2013

Peak Load	34,292 MW
Load Peak Hour (HE)	21
Wind Over Peak	6,905 MW
Wind Record 02/09/13	9,481 MW
Max Wind Value*	7,351 MW
Wind Peak Time	21:57
Wind Integration %	22.34 %

Hourly Average Actual Load vs. Actual Wind Output

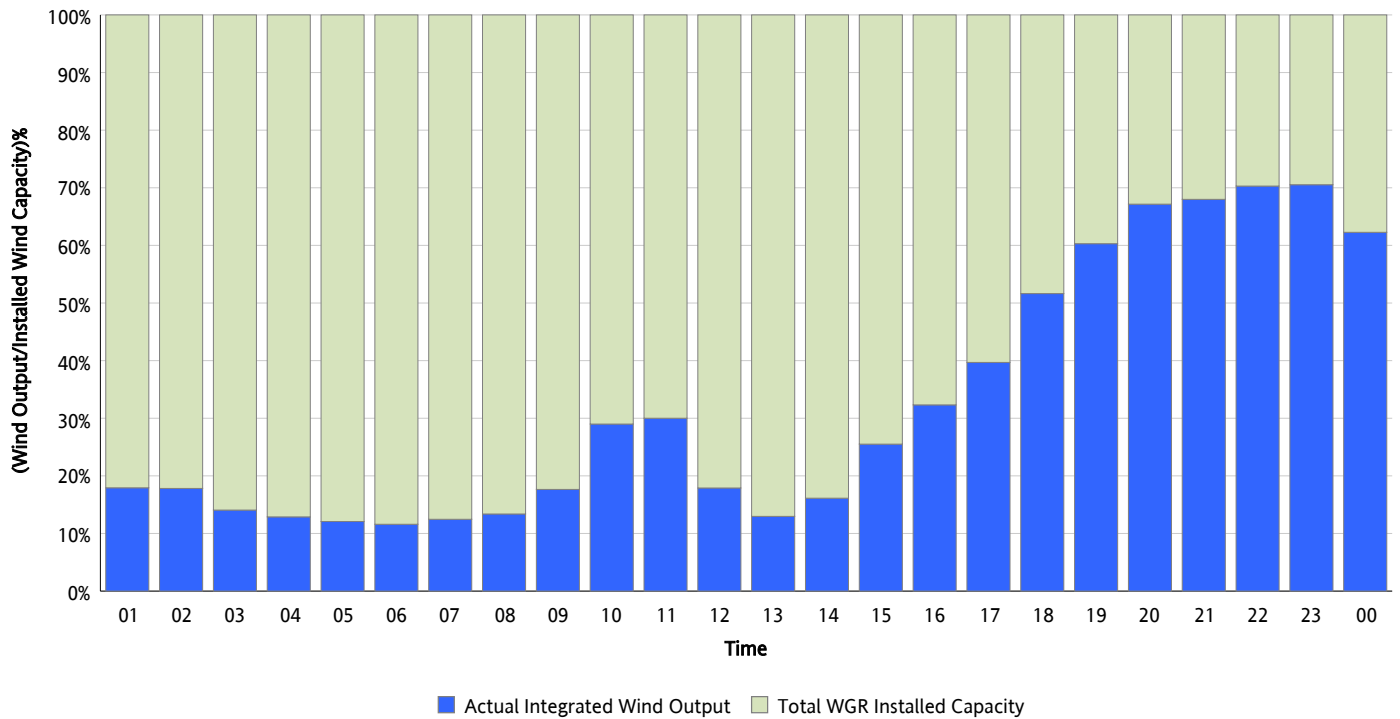
04/25/2013



* Wind Record and Wind Max represent instantaneous values and the rest of the values are integrated over the hour

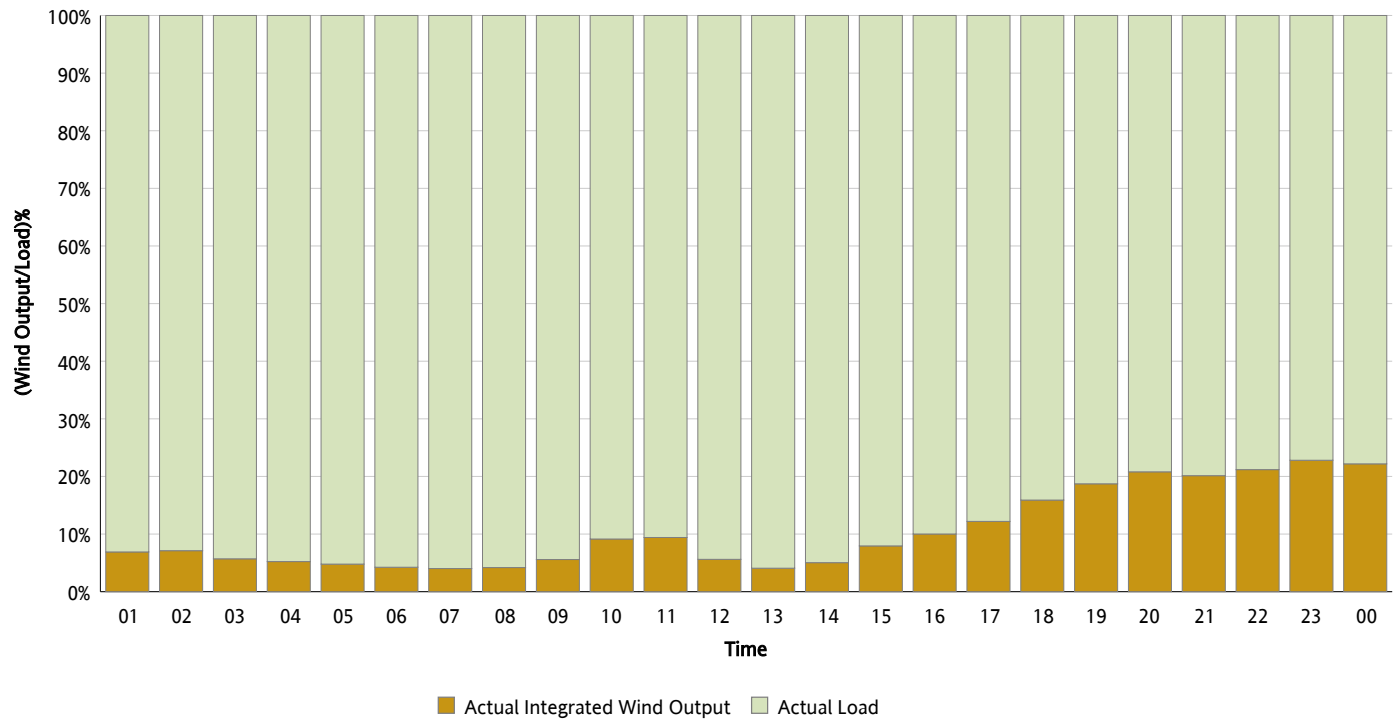
Actual Wind Output as a Percentage of the Total Installed Wind Capacity

04/25/2013



Actual Wind Output as a Percentage of the ERCOT Load

04/25/2013



ERCOT Load vs. Actual Wind Output

04/18/2013 - 04/25/2013

